

Daily Weather Update

Coastal Area Around The Sri Lanka

Information Fusion Center-Colombo



Information Fusion Center
Colombo
Sri Lanka

Date 2026.01.10



WEATHER FORECAST FOR SEA AREAS AROUND THE ISLAND DURING NEXT 24 HOURS

Issued at 05.30 a.m. on 10 January 2026



**DEPARTMENT OF METEOROLOGY
SRI LANKA**

CONDITION OF THE RAIN

Showers or thundershowers will occur at times in the sea areas off the coast extending from Puttalam to Trincomalee via Mannar and Kankasanthurai. Showers or thundershowers may occur at a few places in the other sea areas around the island.

WINDS

Winds will be northerly. Wind speed will be (35-45) kmph in the sea areas off the coast extending from Colombo to Batticaloa via Puttalam, Mannar, Kankasanthurai and Trincomalee. Wind speed can increase up to (60-70) kmph at times in these sea areas. Wind speed will be (25-35) kmph in the other sea areas around the island

STATE OF SEA

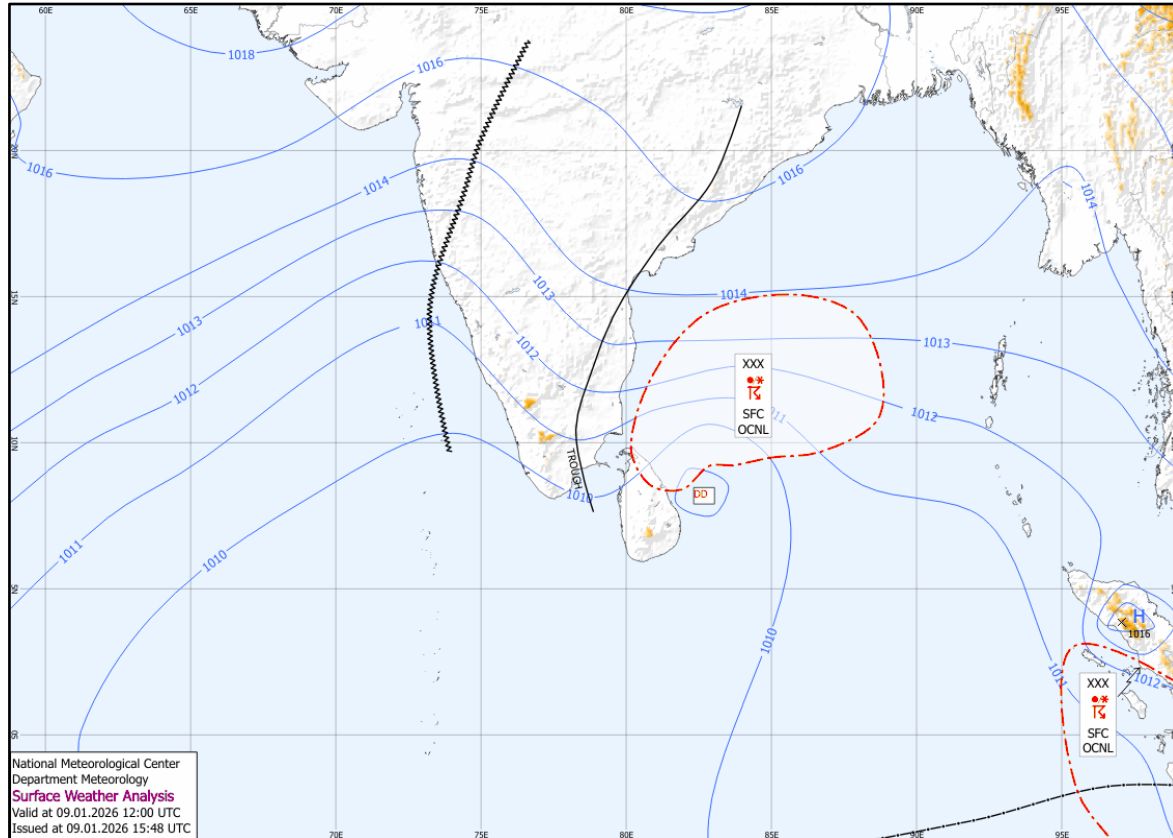
The sea areas off the coast extending from Colombo to Batticaloa via Puttalam, Mannar, Kankasanthurai and Trincomalee will be rough to very rough at times.

The other sea areas around the island may be moderate.

The wave height may increase (about 2.5 – 3.5 m) in the sea areas off the coast extending from Kankasanthurai to Trincomalee (this is not for land area).

Temporarily strong gusty winds and very rough seas can be expected during thundershowers.

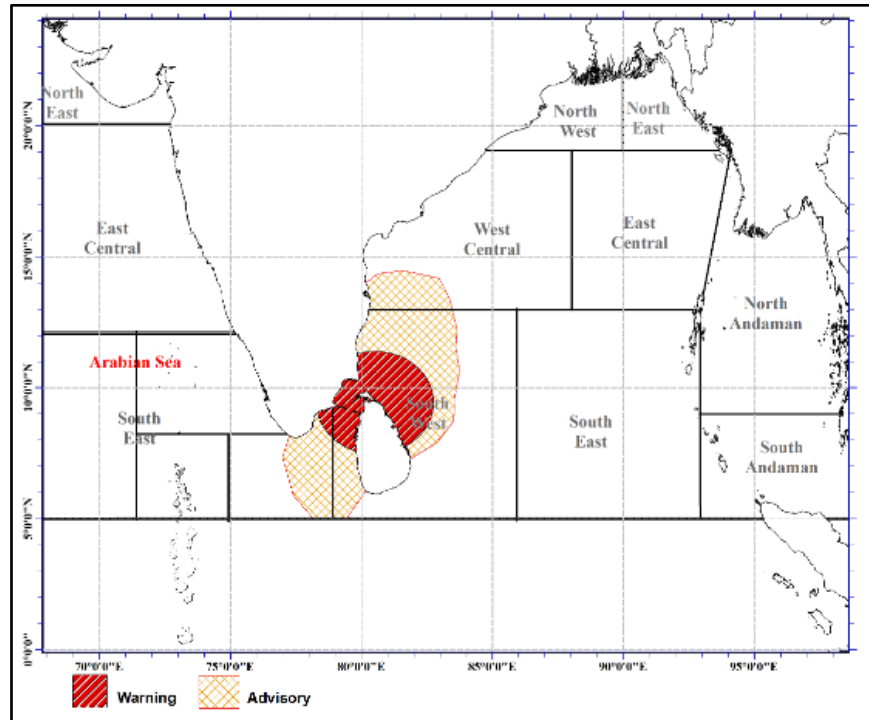
SURFACE ANALYSIS CHART



This analysis charts show the surface pressure pattern over Sri Lanka and the surrounding area. They display isobars (lines of equal pressure) and indicate areas of high (H) and low pressure (L) along with their central pressure value. Isobars are represented by solid blue lines, spaced every 1 hPa. High pressure is usually associated with mainly dry, settled weather with light winds, while low pressure is normally associated with unsettled weather, which is often wet and windy. The lower the pressure, generally the stronger the winds and the heavier the rain.

The map shows Coordinated Universal Time (UTC) and the local time is UTC+5.30. .

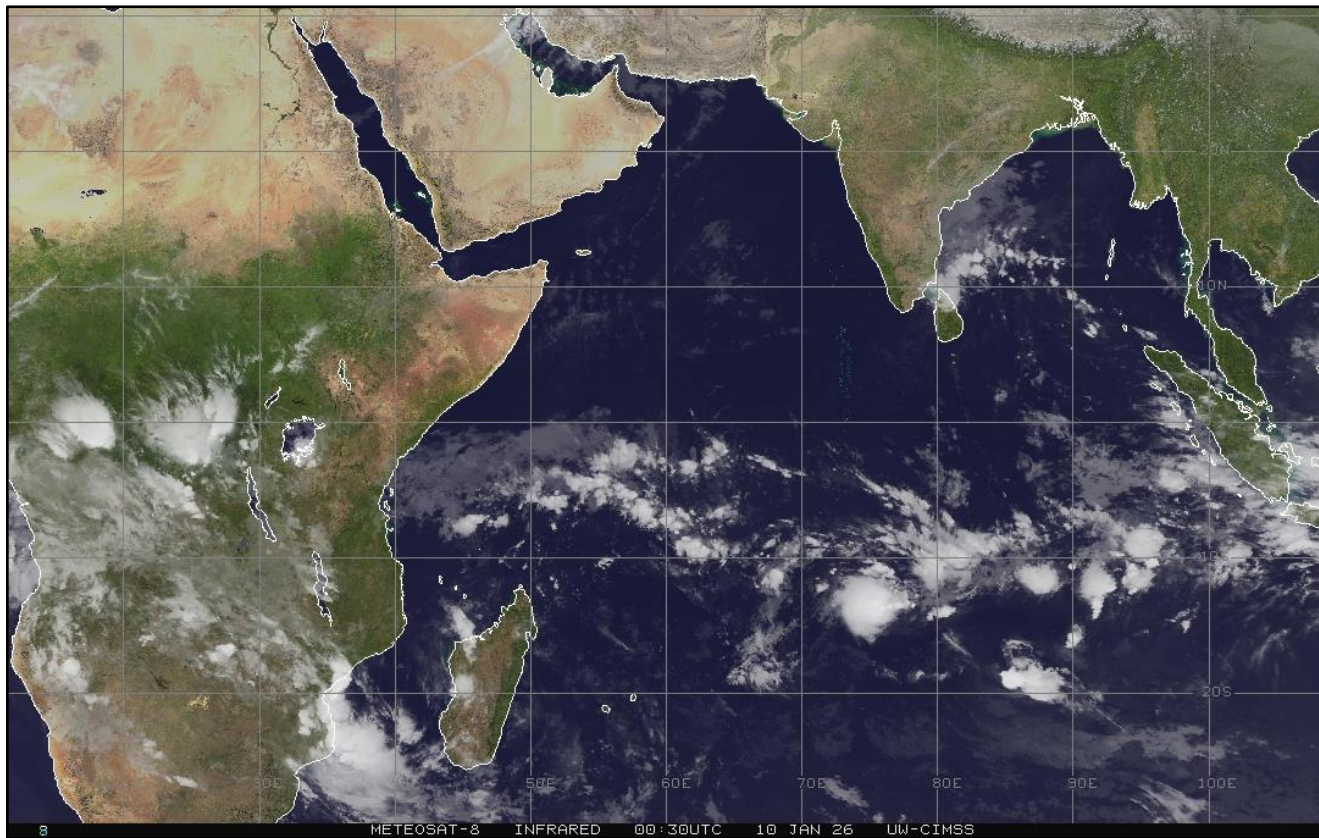
SEVERE ADVERSARY



The depression over the southwest Bay of Bengal was located about 60 km North of Trincomalee at 7:00 a.m. on 10 January 2026. It is likely to weaken and cross the Sri Lanka coast between Trincomalee and Jaffna around noon.

Advisory for depression over Southeast Bay of Bengal.
Issued at 08.00 a.m. on 10 January 2026 for the period until 08.00 a.m. 11 January 2026.

SATELLITE IMAGE



12-Jan-26

IFC -Colombo



Information Fusion Center
Colombo
Sri Lanka

THANK YOU

The Officer Incharge
Information Fusion Centre - Colombo
Naval Headquarters, Colombo, Sri Lanka
+94 11 719 480 6
+94 74 120 4829
ifc@navy.lk
ifc.cbo@gmail.com